

Contents



Richmond Castors	A1
Mounting Plates & Pintles	A4

MPSS	A4
MPZP	A4
P5-25-10	A4
P5-25-12	A4
P6-32-10	A4
P6-32-12	A4
PINTLE 3/4	A4
S2716	A1
S2716 B	A1
S2718	A1
S2718 B	A1
S2720	A1
S2720 B	A1
S2722	A1
S2722 B	A1
S3080	A2
S3080 B	A2
S3106	A3
S3106 B	A3
S3304	A2
S3304 B	A2
S3326	A2
S3326 B	A2
S4080	A3
S4080 B	A3
S4485	A3
S4485 B	A3
S5585	A3
S5585 B	A3



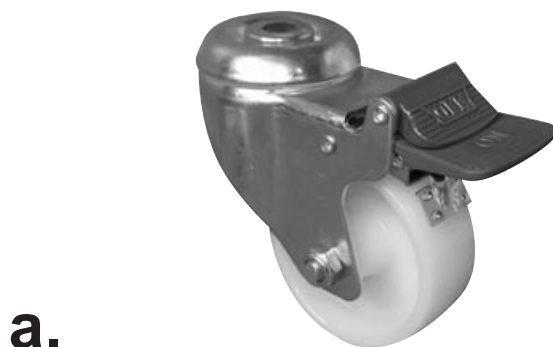
ITEM	STOCK CODE	DESCRIPTION	WHEEL DIAM. mm	WIDTH mm	WHEEL TYPE	BEARING TYPE	LOAD CAPACITY kg*	HEIGHT mm	BOLT SIZE mm
a.	S2716 S2716B	Fixed plate swivel Twin wheel	50	2 x 17	NYLON	PLAIN	70/60	71	-
b.	S2718 S2718B	Fixed plate swivel Twin wheel	50	2 x 17	RUBBER	BALL	70/60	71	-
c.	S2722 S2722B	Single bolt swivel Twin wheel +	50	2 x 17	RUBBER	BALL	70/60	71	10
d.	S2720 S2720B	Single bolt swivel Twin wheel +	50	2 x 17	NYLON	PLAIN	70/60	71	10

B Denotes model with brake

* Load Capacities are based on perfect floor conditions ie. A perfectly flat, smooth floor, indoors without harsh bumps and large floor cracks

If the castors are used in harsh ground environments or attached to items that are dropped, the lower Load Capacity shown will apply

+ Refer to Mounting Plates and Pintles on page A4 for fixing options



ITEM	STOCK CODE	DESCRIPTION	WHEEL DIAM. mm	WIDTH mm	WHEEL TYPE	BEARING TYPE	LOAD CAPACITY kg*	HEIGHT mm	BOLT SIZE mm
a.	S3326 S3326B	Single bolt swivel +	75	30	NYLON	PLAIN	80/45	105	12
b.	S3304 S3304B	Fixed plate swivel	75	30	NYLON	PLAIN	125/100	108	-
c.	S3080 S3080B	Single bolt swivel +	75	30	RUBBER	BALL	80/45	105	12

B Denotes model with brake

* Load Capacities are based on perfect floor conditions ie. A perfectly flat, smooth floor, indoors without harsh bumps and large floor cracks

If the castors are used in harsh ground environments or attached to items that are dropped, the lower Load Capacity shown will apply

+ Refer to Mounting Plates and Pintles on page A4 for fixing options

Richmond Castors



a.



b.



c.



d.

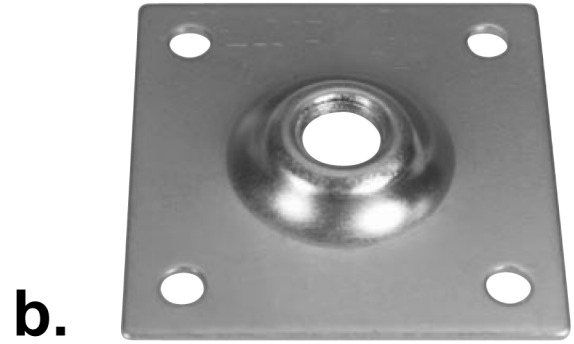
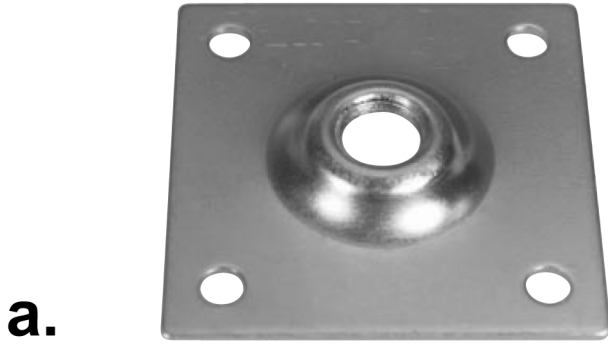
ITEM	STOCK CODE	DESCRIPTION	WHEEL DIAM. mm	WIDTH mm	WHEEL TYPE	BEARING TYPE	LOAD CAPACITY kg*	HEIGHT mm	BOLT SIZE mm
a.	S3106 S3106B	Fixed plate swivel	75	30	POLY NYLON	BALL	80/45	107	-
b.	S4485 S4485B	Single bolt swivel +	100	30	NYLON	PLAIN	100/80	133	12
c.	S4080 S4080B	Single bolt swivel +	100	30	INST RUBBER	BALL	100/80	133	12
d.	S5585 S5585B	Single bolt swivel +	125	30	NYLON	PLAIN	100/80	159	12

B Denotes model with brake

* Load Capacities are based on perfect floor conditions ie. A perfectly flat, smooth floor, indoors without harsh bumps and large floor cracks

If the castors are used in harsh ground environments or attached to items that are dropped, the lower Load Capacity shown will apply

+ Refer to Mounting Plates and Pintles on page A4 for fixing options



ITEM	STOCK CODE	DESCRIPTION
a.	MPZP	Mounting plate, zinc plate, 89mm x 89mm, 3/4" BSW thread
b.	MPSS	Mounting plate, stainless steel, 89mm x 89mm, 3/4" BSW thread
c.	PINTLE 3/4	Steel pintle and lock nut to fit mounting plate, 3/4" BSW thread
d.	P5-25-10 P5-25-12	Expanding pintle for 25mm square tube - 10mm bolt - 12mm bolt
	P6-32-10 P6-32-12	Expanding pintle for 32mm square tube - 10mm bolt - 12mm bolt