

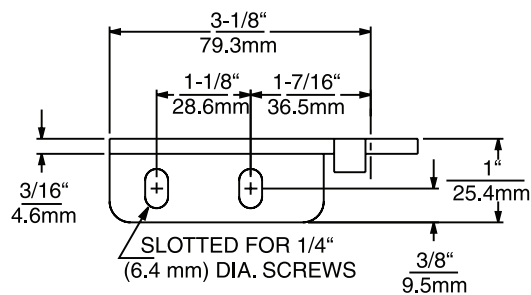
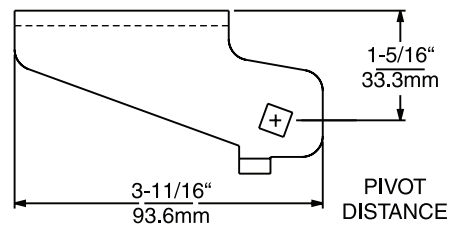
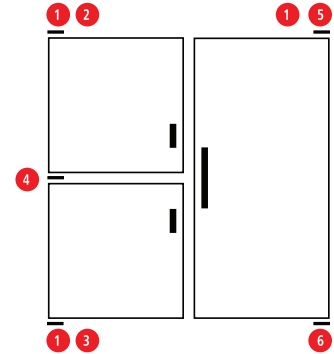
a.



b.

**ASSEMBLY WITH HORIZONTAL BRACKETS:**

- 1. Cartridge Assembly
- 2. Top Cartridge Bracket, LH
- 3. Bottom Cartridge Bracket, LH
- 4. Double Pivot Bracket, LH
- 5. Top Cartridge Bracket, RH
- 6. Bottom Pivot Bracket

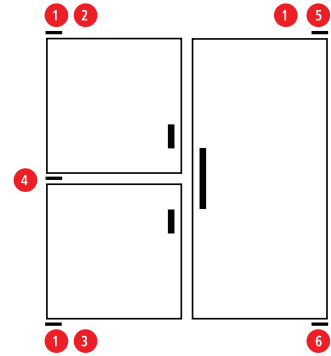


ITEM	STOCK CODE	DESCRIPTION	MATERIAL	MOUNTING
a.	K155604	Spring cartridge assembly. Standard clearance, 120° stop. Compression type music wire spring Closing force: standard cartridges for doors weighing up to 27kg (59lbs) ①	Die-cast Zamak case and upper cam. Nylon lower cam and pivot bearing. Chrome plated	Drilled for 5.0mm screws
	K1556011	Top left hand cartridge bracket ②	High strength steel. Chrome plated	Slotted for 6.4mm screws
b.	K1556012	Top right hand cartridge bracket ⑤	As above	As above
	K1556013	Bottom left hand cartridge bracket ③	As above	As above

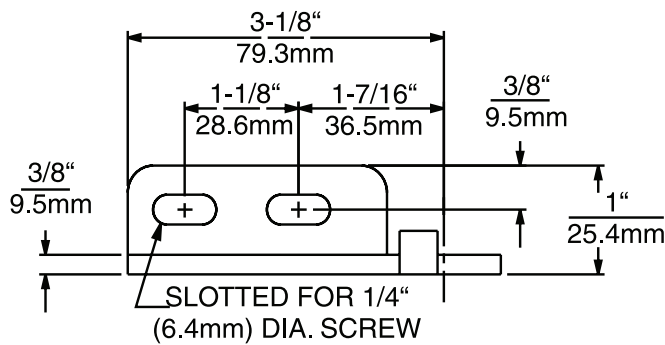
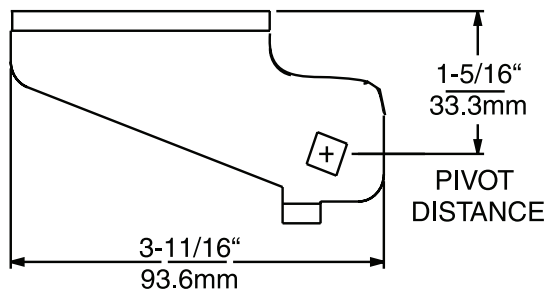


**ASSEMBLY WITH HORIZONTAL BRACKETS:**

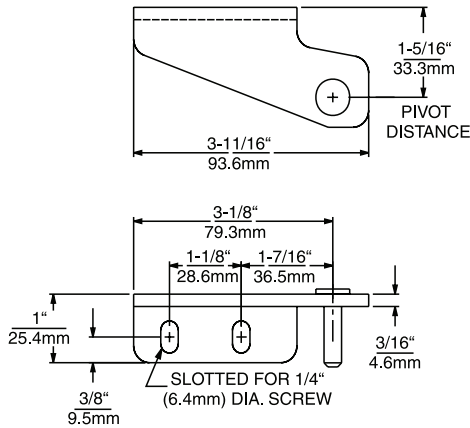
- 1. Cartridge Assembly
- 2. Top Cartridge Bracket, LH
- 3. Bottom Cartridge Bracket, LH
- 4. Double Pivot Bracket, LH
- 5. Top Cartridge Bracket, RH
- 6. Bottom Pivot Bracket



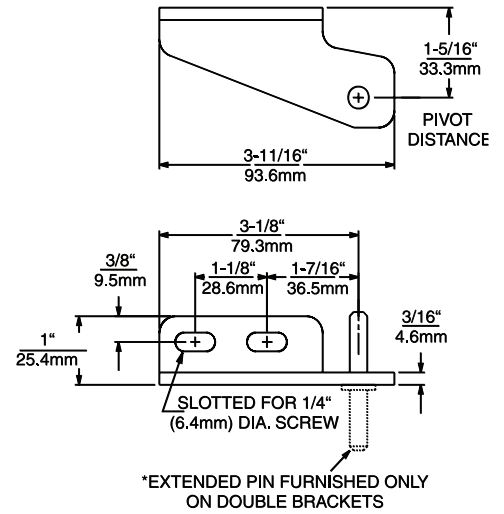
**a.**



ITEM	STOCK CODE	DESCRIPTION	MATERIAL	MOUNTING
a.	K1556014	Bottom right hand cartridge bracket	High strength steel. Chrome plated	Slotted for 6.4mm screws
	K1556021	Top left hand pivot bracket	As above	As above



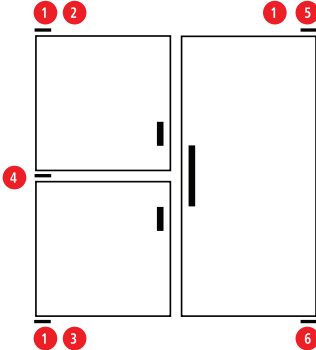
a.



b.

**ASSEMBLY WITH HORIZONTAL BRACKETS:**

- 1. Cartridge Assembly
- 2. Top Cartridge Bracket, LH
- 3. Bottom Cartridge Bracket, LH
- 4. Double Pivot Bracket, LH
- 5. Top Cartridge Bracket, RH
- 6. Bottom Pivot Bracket



c.



ITEM	STOCK CODE	DESCRIPTION	MATERIAL	MOUNTING
a.	K1556022	Top right hand pivot bracket	High strength steel. Chrome plated	Slotted for 6.4mm screws
	K1556023	Bottom left hand pivot bracket	As above	As above
b.	K1556024	Bottom right hand pivot bracket <span style="color: red;">6</span>	As above	As above
	K1556035	Double left hand pivot bracket <span style="color: red;">4</span>	As above	As above
c.	K1556036	Double right hand pivot bracket	As above	As above