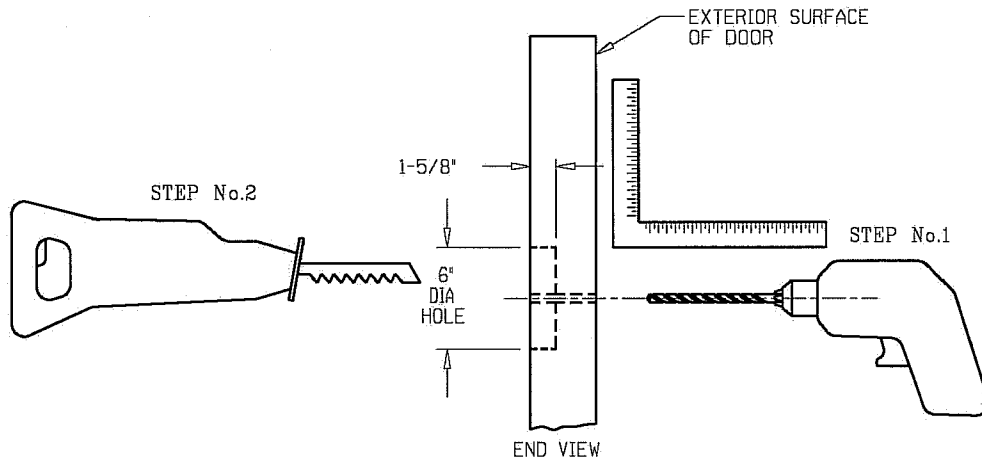


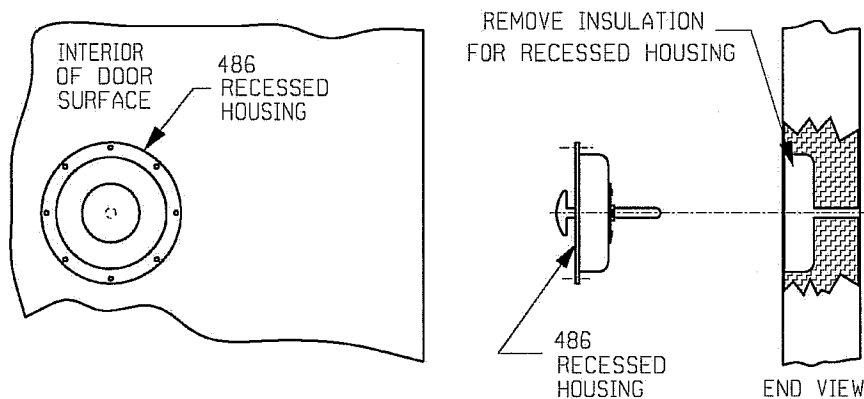


486 INSTRUCTION SHEET

1. Starting at the door exterior surface, drill a 3/4" dia. (19.1mm) through hole aligned with ISR feature on latch. Be certain to drill square to the door face as shown below. (STEP No. 1)
2. Moving to the interior surface of the door, cut a 6" dia. (152.4mm), 1-5/8" (41.3mm) deep hole, located on center of the 3/4" through hole. (STEP No. 2)



3. Hollow out the insulation within the cut-out area to the 1-5/8" depth. Hole will accept recessed housing as shown below. Check fit by placing recessed housing in large hole on interior side of door aligning center hole with 3/4" through hole. Push rod must move freely through insulation.



4. Mount housing to door with (8) eight #10 (5.0mm) round head screws.
5. **Test to assure latch release function. WARNING: Function is critical. Entrapment in freezer can cause severe injury or death.**