

Intertecnica 7325 Internal & External Fastener with Lock for Flush Doors, Door thickness of 70mm - 89mm

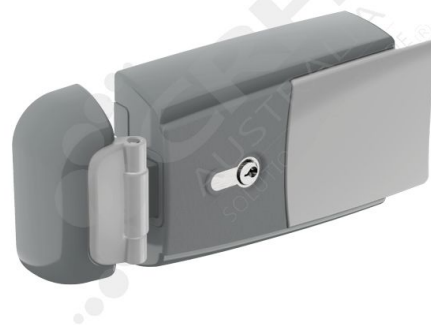
PART No: IN7325F-89

FEATURES

Intertecnica 7325 Internal & External Fastener with Lock for Flush Doors, Door thickness of 70mm - 89mm

Features include:

- European design & styling
- Inside Release with Luminescent Push Button & Strike
- Suitable for Flush Doors only up to 80KG
- Constructed from Industrial Grade Composite for strength and resistance to corrosion
- Suitable for negative & positive temperature conditions -30/+40 °C
- Invisible & Tamperproof fixing
- Interchangeable for left & right-hand opening doors
- Safe and easily activated Internal release mechanism
- Soft & quiet operation



Colour: Grey External Green Internal

Material: Composite

ADDITIONAL INFORMATION

CRH and all manufacturers highly recommend that all internal safety release mechanisms fitted to doors be checked at least three times weekly to ensure they function correctly.

